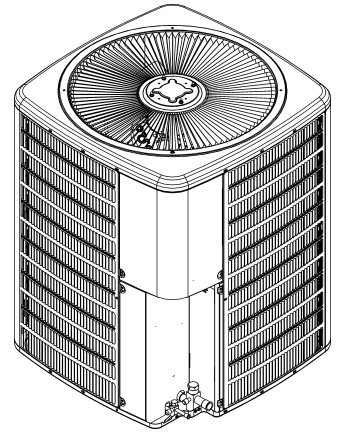




REPAIR PARTS

GSXN40**10 Remote Condensing Unit

GSXN401810AA
GSXN401810AB
GSXN402410AA
GSXN402410AB
GSXN403010AA
GSXN403010AB
GSXN403610AA
GSXN403610AB
GSXN404210AA
GSXN404210AB
GSXN404810AA
GSXN404810AB
GSXN406010AA
GSXN406010AB



This manual is to be used by qualified technicians only.

This manual replaces RP-G4328

© 2022 , 2024 Goodman Manufacturing Company, L.P. ♦ 19001 Kermier Rd. ♦ Waller, TX 77484

Important Information

Index

Functional Parts List	3
Illustration and Parts	4 - 9

Views shown are for parts illustrations only, not servicing procedures.

Text Codes:

AR - As Required

NA - Not Available

NS - Not Shown

00000000 - See Note

QTY - Quantity Example (QTY 3) (If Quantity not shown, Quantity = 1)

M - Model Example (M1) (If M Code not shown, then part is used on all Models)

Expanded Model Nomenclature:

Example M1 - Model#1 M2 - Model#2 M3 - Model#3

Goodman Manufacturing Company, L.P. is not responsible for personal injury or property damage resulting from improper service. Review all service information before beginning repairs.

Warranty service must be performed by an authorized technician, using authorized factory parts. If service is required after the warranty expires, Goodman Manufacturing Company, L.P. also recommends contacting an authorized technician and using authorized factory parts.

Goodman Manufacturing Company, L.P. reserves the right to discontinue, or change at any time, specifications or designs without notice or without incurring obligations.

For assistance within the U.S.A. contact:

Homeowner Support

Goodman Manufacturing Company, L.P.

19001 Kermier Road

Waller, Texas 77484

877-254-4729-Telephone

713-863-2382-Facsimile

For assistance outside the U.S.A. contact:

International Division

Goodman Manufacturing Company, L.P.

19001 Kermier Road

Waller, Texas 77484

713-861-2500-Telephone

713-863-2382-Facsimile

Functional Parts

Part

No: Description:

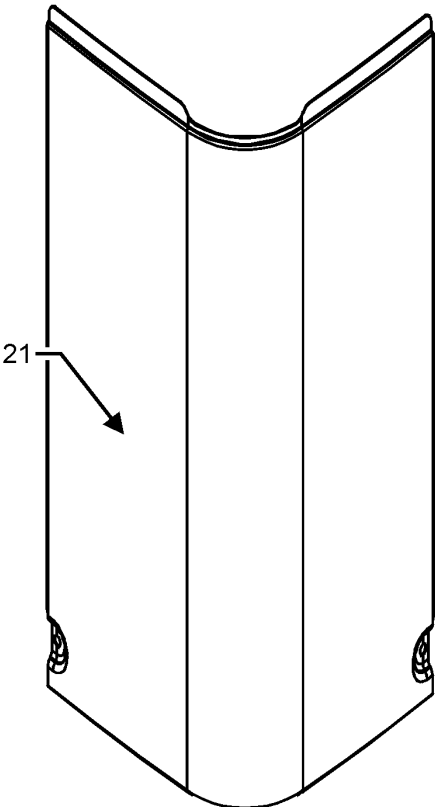
		Expanded Model Nomenclature
0151R00185	BASE VALVE 3/4" (M1, M2, M3, M4)	M1 - GSXN401810AA
0151R00187	BASE VALVE 3/8" (M1, M2, M3, M4, M5, M6, M7, M8, M9, M10, M11, M12)	M2 - GSXN401810AB
0151R00186	BASE VALVE 7/8" (M5, M6, M7, M8, M9, M10, M11, M12, M13, M14)	M3 - GSXN402410AA
0150M00012	BLADE-FAN 20" CCW (M1, M2, M3, M4)	M4 - GSXN402410AB
CAB050350440CS	CAP, 5/35 MFD/440V RD - BPRF (M3, M4, M5, M6)	M5 - GSXN403010AA
CAB050400440CT	CAP, 5/40 MFD/440V RD - BPRF (M7, M8, M11, M12)	M6 - GSXN403010AB
CAB050450440CT	CAP, 5/45 MFD/440V RD - BPRF (M9, M10)	M7 - GSXN403610AA
CAB050700440CT	CAP, 5/70 MFD/440V RD - BPRF (M13, M14)	M8 - GSXN403610AB
CAP050300440CS	CAP, 5/30MFD/440V/DUAL RD (M1, M2)	M9 - GSXN404210AA
0130R00116	CAPACITOR HARD START (M1, M2, M3, M4, M5, M6)	M10 - GSXN404210AB
50N4928V-ZAKM	COMPRESSOR (M3, M4)	M11 - GSXN404810AA
50N3829V-ZAKM	COMPRESSOR (M1, M2)	M12 - GSXN404810AB
5VS245FAA21	COMPRESSOR (M5, M6)	M13 - GSXN406010AA
ZP40K7EPFV130	COMPRESSOR, COPELAND (M11, M12)	M14 - GSXN406010AB
ZP34K7EPFV130	COMPRESSOR, COPELAND (M9, M10)	
ZP31K7EPFV130	COMPRESSOR, COPELAND (M7, M8)	
ZP51K7EPFV130	COMPRESSOR, COPELAND (M13, M14)	
CONT1P030024V	CONTACTOR 30 AMP, 1P, 24V	
0130M00106	DISC TERM CRNKCS HTR SW (M13, M14)	
0130M00349	DISC THERMOSTAT (M7, M8, M9, M10, M11, M12, M13, M14)	
0150M00008	FAN BLADE, 22" TNT2203-25 (M5, M6)	
0150M00054	FAN BLADE, 26" (M7, M8, M9, M10, M11, M12, M13, M14)	
0163R00007	HEATER CRANKCASE 230V 40W (M13, M14)	
0131M00807	MOTOR, 1/4HP, 1SP, 8PL, AL (M11, M12, M13, M14)	
0131M00753	MOTOR, 1/6HP, 1SP, 8PL, AL (M5, M6, M7, M8)	
0131M00945	MOTOR, 1/6HP, 8PL (M9, M10)	
0131M00969	MOTOR, 1/8HP, 8PL, PSC (M1, M2, M3, M4)	
0130M00851	PRE-WIRED RELAY, HARD START (M1, M2, M3, M4, M5, M6)	
0130M00089	SW-CUTOUT HI PRESS (M5, M6)	

SPECIAL PARTS

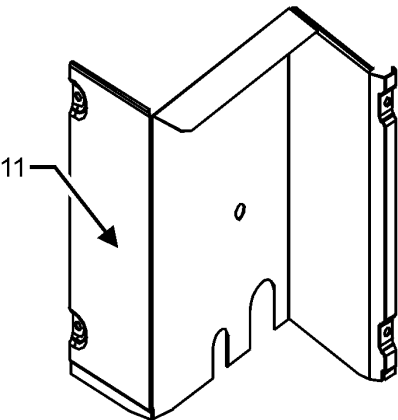
0161R00092 NAMEPLATE, GOODMAN

Control Panel Assembly

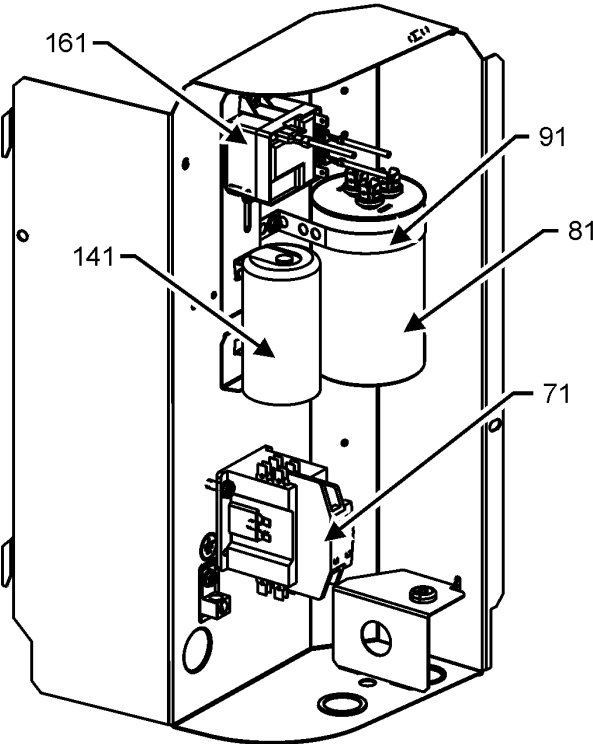
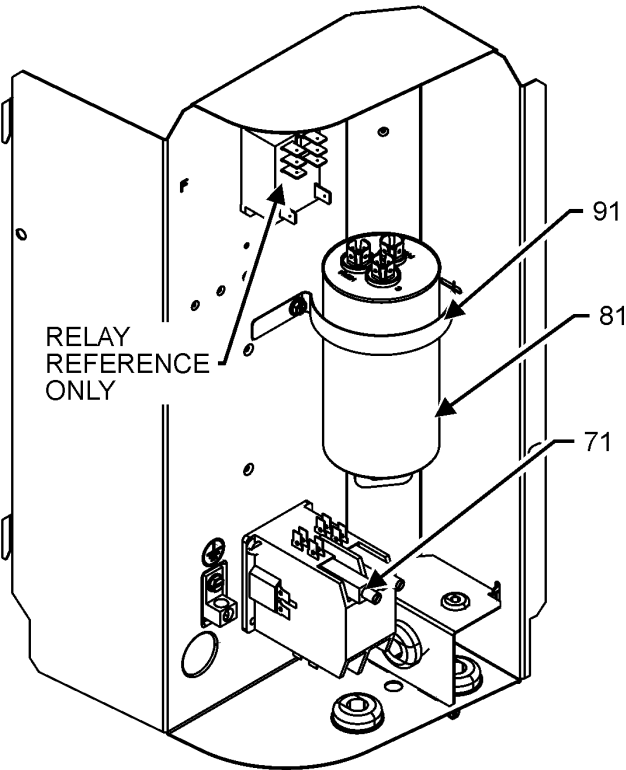
CONTROL PANEL ASSEMBLY



UPPER ACCESS COVER



LOWER ACCESS PANEL



CONTROL PANEL ASSEMBLY MAY DIFFER FROM WHAT IS SHOWN

Control Panel Assembly

Ref. Part No: No:	Description:	Ref. Part No: No:	Description:
----------------------	--------------	----------------------	--------------

Image 1:

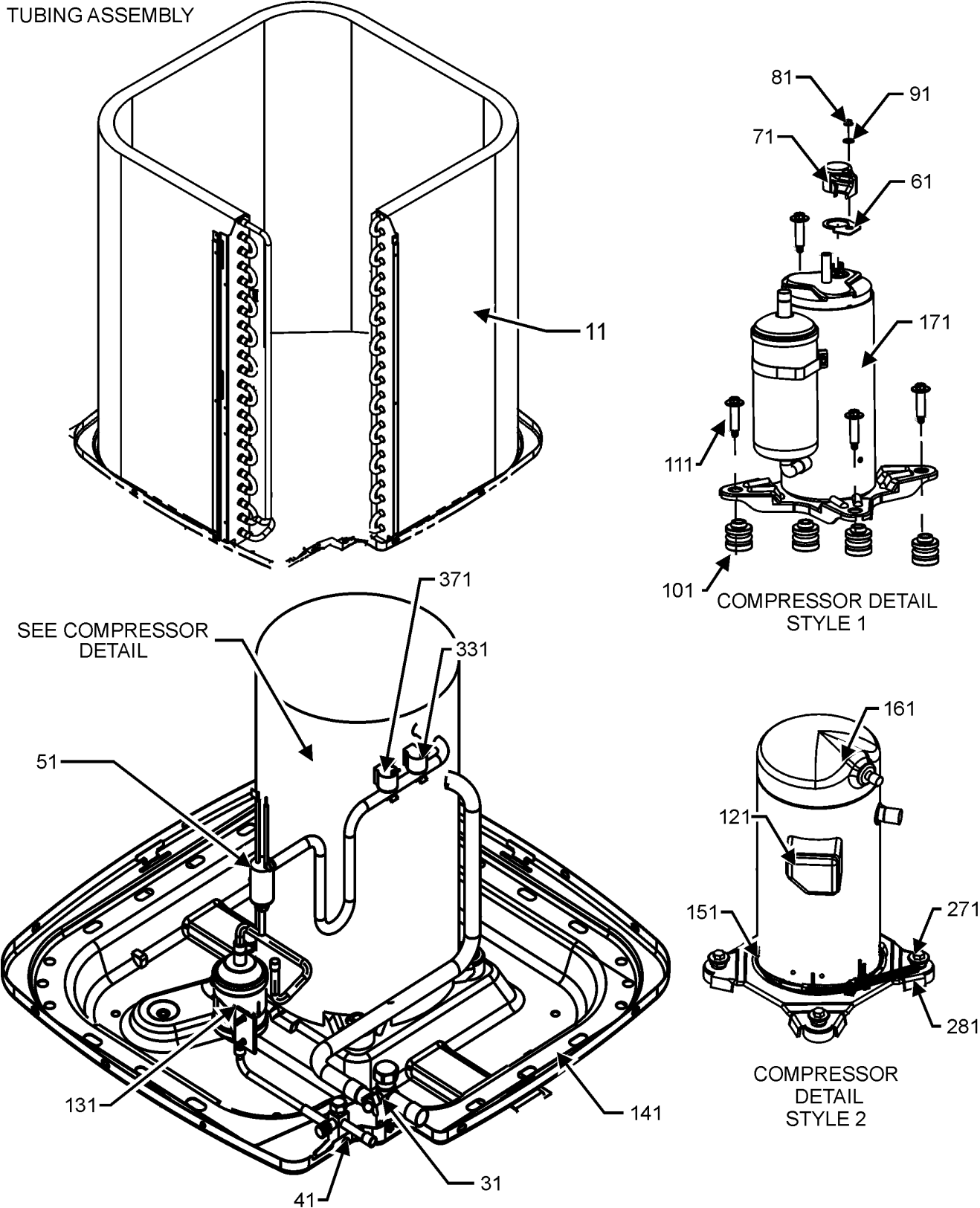
11	0121R00909PDG	PNL, LWR ACCESS (M5, M6, M9, M10, M11, M12)
11	0121R00912PDG	PNL, LWR ACCESS (M7, M8)
11	0121R00915PDG	PNL, LWR ACCESS (M1, M2)
11	0121R00917PDG	PNL, LWR ACCESS (M13, M14)
11	0121R00919PDG	PNL, LWR ACCESS (M3, M4)
21	0121R00937PDG	CONTROL COVER, PNT
71	CONT1P030024V	CONTACTOR 30 AMP, 1P, 24V
81	CAB050350440CS	CAP, 5/35 MFD/440V RD - BPRF (M3, M4, M5, M6)
81	CAB050400440CT	CAP, 5/40 MFD/440V RD - BPRF (M7, M8, M11, M12)
81	CAB050450440CT	CAP, 5/45 MFD/440V RD - BPRF (M9, M10)
81	CAB050700440CT	CAP, 5/70 MFD/440V RD - BPRF (M13, M14)
81	CAP050300440CS	CAP, 5/30MFD/440V/DUAL RD (M1, M2)
91	4400065	CAPACITOR STRAP
141	0130R00116	CAPACITOR HARD START (M1, M2, M3, M4, M5, M6)
161	0130M00851	PRE-WIRED RELAY, HARD START (M1, M2, M3, M4, M5, M6)
NS	0161R00092	NAMEPLATE, GOODMAN

Expanded Model Nomenclature

M1 - GSXN401810AA
M2 - GSXN401810AB
M3 - GSXN402410AA
M4 - GSXN402410AB
M5 - GSXN403010AA
M6 - GSXN403010AB
M7 - GSXN403610AA
M8 - GSXN403610AB
M9 - GSXN404210AA
M10 - GSXN404210AB
M11 - GSXN404810AA
M12 - GSXN404810AB
M13 - GSXN406010AA
M14 - GSXN406010AB

Compressor and Tubing Assembly

TUBING ASSEMBLY



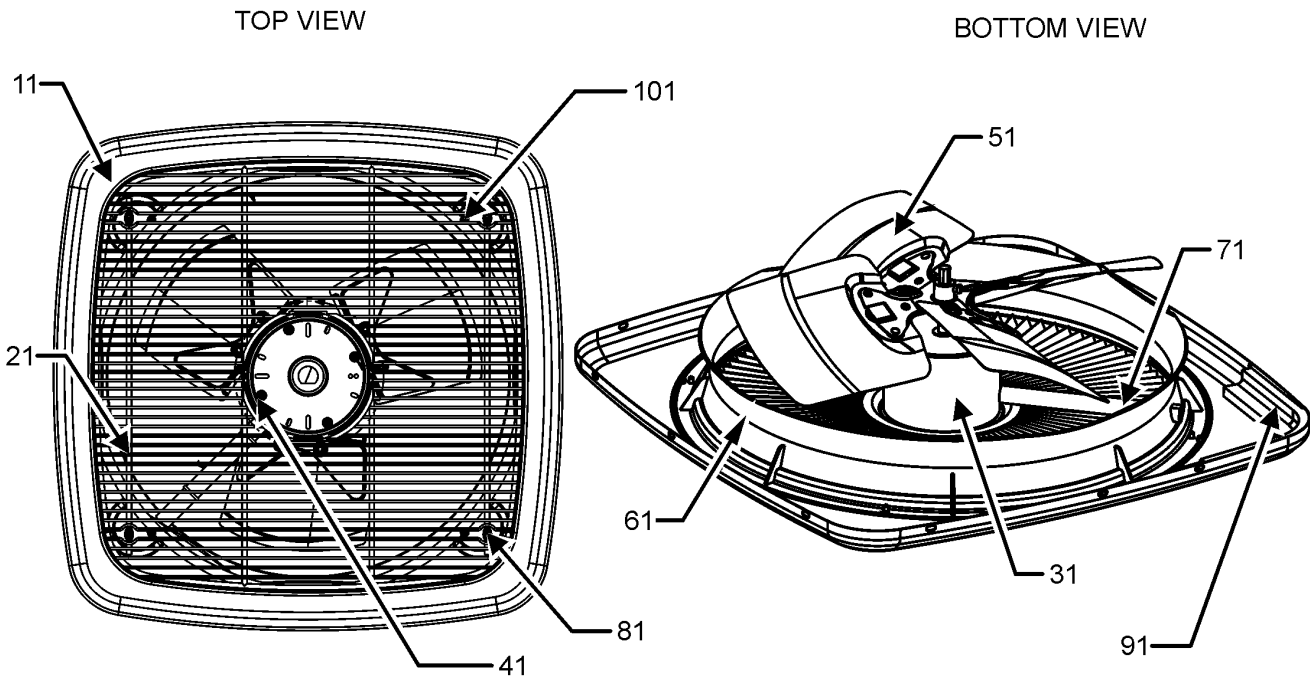
ACTUAL TUBING ASSEMBLY MAY DIFFER FROM WHAT IS SHOWN

Compressor and Tubing Assembly

Ref. Part No: No:	Description:	Ref. Part No: No:	Description:
Image 1:		Expanded Model Nomenclature	
11	0201R00236	COIL TUBING ASSY (M5, M6)	M1 - GSXN401810AA
11	0201R00311	COIL TUBING ASSY (M7, M8)	M2 - GSXN401810AB
11	0201R00433	COIL TUBING ASSY (M11, M12)	M3 - GSXN402410AA
11	0201R00666	COIL TUBING ASSY (M3, M4)	M4 - GSXN402410AB
11	0201R00732	COIL TUBING ASSY (M13, M14)	M5 - GSXN403010AA
11	0201R00778	COIL TUBING ASSY (M1, M2)	M6 - GSXN403010AB
11	0201R00809	COIL TUBING ASSY (M9, M10)	M7 - GSXN403610AA
31	0151R00185	BASE VALVE 3/4" (M1, M2, M3, M4)	M8 - GSXN403610AB
31	0151R00186	BASE VALVE 7/8" (M5, M6, M7, M8, M9, M10, M11, M12, M13, M14)	M9 - GSXN404210AA
41	0151R00187	BASE VALVE 3/8" (M1, M2, M3, M4, M5, M6, M7, M8, M9, M10, M11, M12)	M10 - GSXN404210AB
51	0130M00089	SW-CUTOUT HI PRESS (M5, M6)	M11 - GSXN404810AA
61	0154M00003	GASKET, TERM COVER (M5, M6)	M12 - GSXN404810AB
61	60100107	TERMINAL COVER GASKET (M1, M2, M3, M4)	M13 - GSXN406010AA
71	0130M00028	TERMINAL COVER (M5, M6)	M14 - GSXN406010AB
71	60100317	TERMINAL COVER (M1, M2, M3, M4)	
81	0163M00468	TERMINAL COVER NUT (M5, M6)	
81	60100401	TERMINAL NUT - RECHI COMP (M1, M2, M3, M4)	
91	0154M00078	TERMINAL COVER NUT GASKET (M5, M6)	
91	60100201	WASHER - RECHI COMPRESSOR (M1, M2, M3, M4)	
101	60140209	GROMMET - RECHI COMPRESSOR (M1, M2, M3, M4)	
101	0164M00000P	GROMMET, COMP, PANASONIC (M5, M6)	
111	0163M00186	SCREW-SHOULDER TF (M1, M2, M3, M4)	
111	0163M00502	SCREW-SHOULDER TF BLUE (M5, M6)	
121	0159R00002P	HARNESS, COMP SCROLL 130 46" (M7, M8, M9, M10, M11, M12, M13, M14)	
131	0162R00057	FILTER DRIER	
141	0121R00005PDG	BASE PAN, 26" PNT (M1, M2, M3, M4)	
141	0121R00006PDG	BASE PAN, 29" PNT (M5, M6)	
141	0121R01090PDG	PAINTED BASE PAN 35.5" (M7, M8, M9, M10, M11, M12, M13, M14)	
151	0163R00007	HEATER CRANKCASE 230V 40W (M13, M14)	
161	ZP31K7EPFV130	COMPRESSOR, COPELAND (M7, M8)	
161	ZP34K7EPFV130	COMPRESSOR, COPELAND (M9, M10)	
161	ZP40K7EPFV130	COMPRESSOR, COPELAND (M11, M12)	
161	ZP51K7EPFV130	COMPRESSOR, COPELAND (M13, M14)	
171	50N3829V-ZAKM	COMPRESSOR (M1, M2)	
171	50N4928V-ZAKM	COMPRESSOR (M3, M4)	
171	5VS245FAA21	COMPRESSOR (M5, M6)	
271	M0221641	TF SHOULDER SCREW (M7, M8, M9, M10, M11, M12, M13, M14)	
281	B1339533	COMPRESSOR GROMMET (M7, M8, M9, M10, M11, M12, M13, M14)	
331	0130M00106	DISC TERM CRNKCS HTR SW (M13, M14)	
371	0130M00349	DISC THERMOSTAT (M7, M8, M9, M10, M11, M12, M13, M14)	
NS	0160M00036	COMPRESSOR BLANKET (M1, M2, M3, M4, M5, M6)	

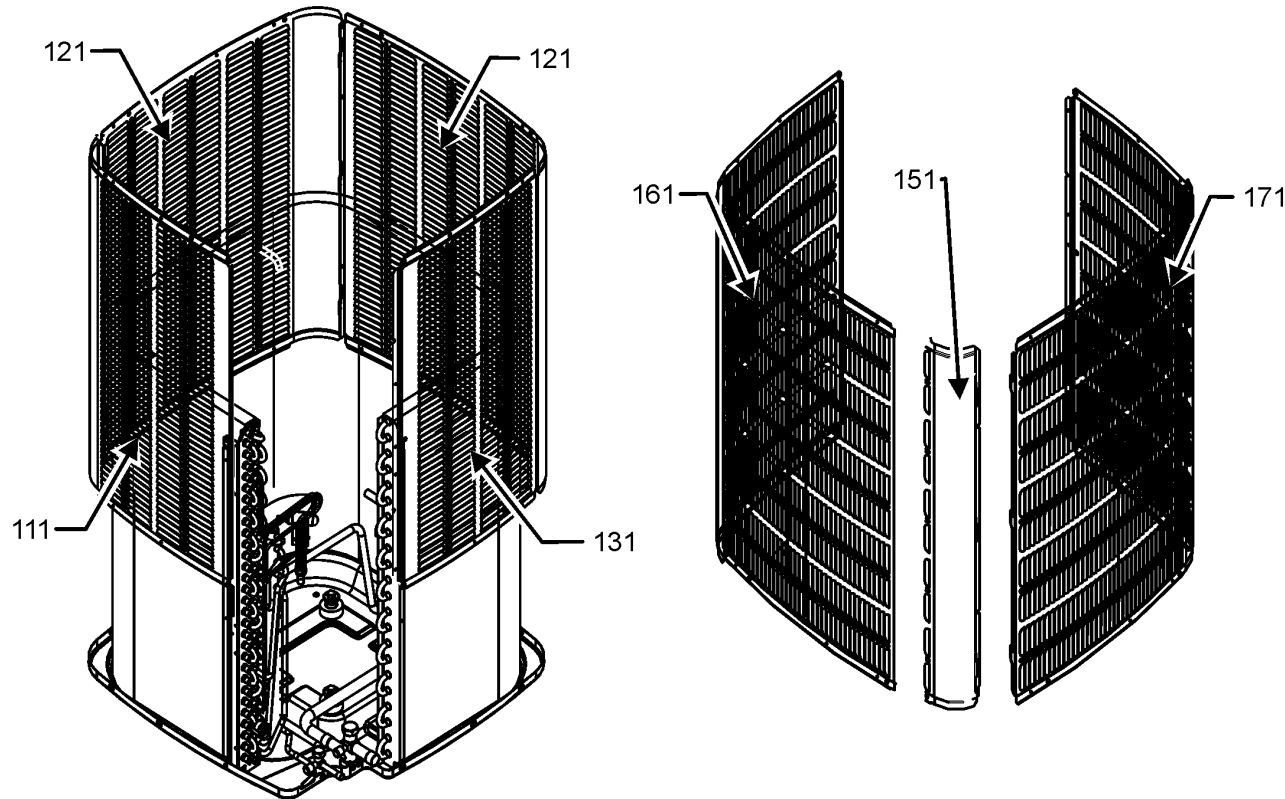
Top and Louver Panel Assembly

TOP PANEL AND LOUVER PANEL ASSEMBLY



LOUVER PANEL ASSEMBLY STYLE 1

LOUVER PANEL ASSEMBLY STYLE 2



TOP PANEL AND LOUVER ASSEMBLY MAY DIFFER FROM WHAT IS SHOWN

Top and Louver Panel Assembly

Ref. Part No: No:	Description:	Ref. Part No: No:	Description:
Image 1:		Expanded Model Nomenclature	
11	0121R00931PDG	PANEL, TOP 26. PNT (M1, M2, M3, M4)	M1 - GSXN401810AA
11	0121R00935PDG	PANEL, TOP 29. PNT (M5, M6)	M2 - GSXN401810AB
11	0121R00936PDG	TOP PANEL, 35. PNT (M7, M8, M9, M10, M11, M12, M13, M14)	M3 - GSXN402410AA
21	0152R00024	26" GRILLE CFS (M1, M2, M3, M4)	M4 - GSXN402410AB
21	0152R00025	29" GRILLE CFS (M5, M6)	M5 - GSXN403010AA
21	0152R00026	GRILL, WIRE 35. TOP (M7, M8, M9, M10, M11, M12, M13, M14)	M6 - GSXN403010AB
31	0131M00807	MOTOR, 1/4HP,1SP,8PL,AL (M11, M12, M13, M14)	M7 - GSXN403610AA
31	0131M00753	MOTOR, 1/6HP, 1SP, 8PL, AL (M5, M6, M7, M8)	M8 - GSXN403610AB
31	0131M00945	MOTOR, 1/6HP, 8PL (M9, M10)	M9 - GSXN404210AA
31	0131M00969	MOTOR, 1/8HP, 8PL, PSC (M1, M2, M3, M4)	M10 - GSXN404210AB
41	0163M00006P	ACORN NUT 5/16 HEX BLACK (QTY 4)	M11 - GSXN404810AA
51	0150M00012	BLADE-FAN 20" CCW (M1, M2, M3, M4)	M12 - GSXN404810AB
51	0150M00008	FAN BLADE, 22" TNT2203-25 (M5, M6)	M13 - GSXN406010AA
51	0150M00054	FAN BLADE, 26" (M7, M8, M9, M10, M11, M12, M13, M14)	M14 - GSXN406010AB
61	0161R00103	26" VENTURI CFS (M1, M2, M3, M4)	
61	0161R00104	29" VENTURI CFS (M5, M6)	
61	0161R00105	35" VENTURI CFS (M7, M8, M9, M10, M11, M12, M13, M14)	
71	0161R00005P	CONDUIT (M7, M8, M9, M10, M11, M12, M13, M14)	
71	0161R00122	CONDUIT (M1, M2, M3, M4)	
71	0161R00123	CONDUIT (M5, M6)	
81	0163M00003P	SCREW,#10 X 1/2,A,SLOT,SR,BLK (QTY 4)	
91	0154R00045	GASKET, CONTROL PANEL	
101	0163M00004	SCREW 10X3/4 BLK (QTY 4)	
111	0121R00228PDG	PANEL 1, LOUVER 35, 5MM, PNT (M7, M8)	
111	0121R00592PDG	PANEL 1, LOUVER 35_34.64 PNT (M13, M14)	
111	0121R00229PDG	PANEL 1,LOUVER 35,37.8 5MM,PNT (M9, M10, M11, M12)	
121	0121R00232PDG	PANEL 2, LOUVER 35 (M9, M10, M11, M12)	
121	0121R00231PDG	PANEL 2, LOUVER 35, 5MM, PNT (M7, M8)	
121	0121R00594PDG	PANEL 2, LOUVER 35_34.64 PNT (M13, M14)	
131	0121R00235PDG	PANEL 3, LOUVER 35, 37.8 (M9, M10, M11, M12)	
131	0121R00235PDG	PANEL 3, LOUVER 35, 37.8 (M9, M10, M11, M12)	
131	0121R00234PDG	PANEL 3, LOUVER 35, 5MM, PNT (M7, M8)	
131	0121R00596PDG	PANEL 3, LOUVER 35_34.64 PNT (M13, M14)	
151	0121R00347PDG	Louver Post, PDG 23.73 (M1, M2)	
151	0121R00350PDG	Louver Post, PDG 28.73 (M3, M4)	
151	0121R00354PDG	Louver Post, PDG 36.30 (M5, M6)	
161	0121R00336PDGLS	Louver Panel, PDG 26" _23.73 (M1, M2)	
161	0121R00337PDGLS	Louver Panel, PDG 26" _28.73 (M3, M4)	
161	0121R00346PDGLS	Louver Panel, PDG 29" _36.30 (M5, M6)	
171	0121R00336PDGRS	Louver Panel, PDG 26" _23.73 (M1, M2)	
171	0121R00337PDGRS	Louver Panel, PDG 26" _28.73 (M3, M4)	
171	0121R00346PDGRS	Louver Panel, PDG 29" _36.30 (M5, M6)	
NS	0163M00005P	WASHER, BLACK (.50 OD .218D) (QTY 4)	