

# **Arzel Zoning** TECHNOLOGY

## Product Guide



**Zoning done right. Since 1983.**



[www.arzelzoning.com](http://www.arzelzoning.com)

# Table of Contents

Zoning Overview .....	3
Why Sell Arzel Zoning? .....	4
Basic Design: the 5 Rules of Zoning.....	6
Bypass.....	7
Zoning Control Panels.....	8
Accessories & Specialty Panels .....	10
Zoning Dampers.....	11
Bypass Dampers.....	14
Balancing Dampers .....	15
Small-Duct High-Velocity Dampers.....	15
Installation Components (Tubing & Fittings).....	16
Installation Tools.....	16
Replacement Parts.....	17
Training Opportunities.....	18
Resources for Homeowners .....	19
Warranty Information .....	20
Technical Support.....	20

## The Arzel Difference

Since 1983, Arzel® Zoning has been manufacturing industry-leading zoning systems that offer the quietest, most efficient, and most reliable solution to the comfort issues people face in their homes or office every day.

Arzel's systems are also the easiest to install, which means it saves contractors' time and labor cost.

Arzel offers the sales, marketing, and technical support needed to make selling and installing its systems the best option.



# Zoning Overview

---



When a home or business is zoned, rooms are grouped together according to usage and conditioning needs.

A zoning system usually consists of a control panel, dampers, and a temperature controller for each zone. Dampers are installed within the ductwork and control the airflow to each zone.

The zoning control panel is tied into the structure's heating and cooling system, and when a zone calls for either heating or cooling, it opens or closes the appropriate dampers.



# Why sell Arzel Zoning?

With homeowners staying in their homes now more than ever, they are not only exploring solutions to improve their indoor air quality and save on energy bills but resolve their comfort issues for good.

By offering HVAC Zoning to your customers, you are not only creating business for your company but establishing yourself as a comfort expert in your area.

An Arzel® Zoning System is like no other available on the market today.

Our innovative pneumatic technology offers a simple, easy and reliable solution to the comfort challenges people face in homes every day.

Manufactured in the USA, our products come with a lifetime warranty and a 100% Comfort Guarantee, making us the best choice for retrofit or new construction applications, whether residential or light commercial.

Technical Support is available for you during regular business hours and after hours when you need it most.

## **Contractor Tech Support**

Call  
**1-800-611-8312**

Available 7 days a week,  
from 8:00 am – 9:00 pm EST

A large, bold, blue capital letter 'A' with a yellow outline, positioned on a white background.A large, bold, blue capital letter 'R' with a yellow outline, positioned on a white background.A large, bold, blue capital letter 'Z' with a yellow outline, positioned on a white background.A large, bold, blue capital letter 'E' with a yellow outline, positioned on a white background.A large, bold, blue capital letter 'L' with a yellow outline, positioned on a white background.



### **Air-Driven Dampers**

Arzel® Zoning Systems feature motor-less, pneumatic or air-driven dampers, which are not only quiet but reliable too.

### **Retrofit Friendly and Widely Compatible**

Arzel® Zoning Systems are designed with you in mind. They work with any standard R-W-Y-G 24-volt system, and our dampers are retrofit-ready.

### **Zero Maintenance & 100% Comfort**

Arzel® Zoning systems require no maintenance and are backed by our 100% Comfort Guarantee. If your customer is unsatisfied within one year, Arzel will buy back the system!

### **Easy Installation with Less Mess**

Most Arzel® Zoning systems can be installed in one day with little to no inconvenience or mess to your customer's home.

### **Limited Lifetime Warranty**

There is no risk in purchasing and installing. Rest easy knowing Arzel® Zoning's lifetime guarantee covers you.

# Basic Design: 5 Rules of Zoning

---

Important rules apply whether designing a residential or commercial zoning application, retrofit, or brand-new construction, and we call them the *5 Rules of Zoning*.



## 1. Get the homeowner's input

Ask the Homeowner about their usage patterns, such as the daytime and nighttime zones, if they have any special comfort requirements, and where their comfort problem areas are.



## 2. Do load calculations where needed

Is there enough ductwork to satisfy the load? Use block loads and consider load shift.



## 3. Place thermostats within zones

Pick a location for the thermostat within zones by asking yourself: What area will the thermostat measure? What does it know about anywhere else?



## 4. Main suite deserves a thermostat

We spend a large portion of our lives sleeping. Installing a thermostat in the main suite of the house makes sense so homeowners can sleep comfortably while saving energy in the rest of the house.



## 5. Small zones can be trouble

Determine the minimum zone size by the percentage of available ductwork. For PSC Blower Motors, try to limit zones to no smaller than 35% of total ductwork capacity and 25% on V-spd/ECM Blower motors with zone weighting and minimal bypass. **Do not microzone!**



# Bypass

Use the modulating bypass damper for variable speed systems and precise control. Use the barometric bypass damper with a simple weighted arm for commercial systems, or when you have 2 or 3 relatively equal zones.

## Branch Dampers

Smallest Zone CFM	Blower Tonnage						Round Bypass Size
	2	2.5	3	3.5	4	5	
100	*	8	8	10	10	12	
200	*	*	8	8	10	10	
300	N/A	N/A	*	*	8	10	
400	N/A	N/A	N/A	*	*	8	
500	N/A	N/A	N/A	N/A	*	8	
600	N/A	N/A	N/A	N/A	N/A	*	
700	No Bypass Required						
800	No Bypass Required						
900	No Bypass Required						
1000	No Bypass Required						

N/A = no bypass required

## Trunk Dampers

	Blower Tonnage						Round Bypass Size
Smallest Zone CFM	2	2.5	3	3.5	4	5	
100	8	10	10	12	12	14	
200	8	10	10	12	12	14	
300	*	*	8	10	10	12	
400	N/A	*	*	8	10	12	
500	N/A	N/A	*	*	8	10	
600	N/A	N/A	N/A	*	*	10	
700	N/A	N/A	N/A	N/A	*	8	
800	N/A	N/A	N/A	N/A	N/A	*	
900	N/A	N/A	N/A	N/A	N/A	*	
1000	No Bypass Required						

N/A = no bypass required

- Calculate bypass from low stage CFM tonnage when combining 2-stage split systems with HeatPumPro or GTPro panels and using zone weight.
- Keep the bypass as small as possible.
- Bypass should be at least 8 ft. from the return drop when possible.

## Other Bypass Sizing Considerations

### Flex Duct

Down-size the bypass by one size due to increased friction loss inherent in flex duct.

### Distant Zones

Duct length greater than 200 ft. may require a one size decrease due to increased friction loss.

### Close Zones

Duct length less than 50 ft. may require a one size increase.

### Special Purpose Zones

Usage patterns may require an increase in bypass size.

# Zoning Control Panels

Our product line is designed with you, the retrofit contractor, in mind. We pride ourselves on providing retrofit solutions for any existing application, allowing contractors to offer zoning on any job without redesigning or modifying existing ductwork.

## HeatPumpPro®

The HeatPumpPro®'s software-based programming offers built-in staging control. While initially designed specifically for heat pump applications, the flexibility of the software has made it possible to use it with mostly all types of HVAC systems, such as conventional furnace and A/C split systems, heat pumps with electric backup, and dual fuel systems.

Part#	Description
PAN-HPP02.....	HeatPumpPro - 2 zones
PAN-HPP03.....	HeatPumpPro - 3 zones
PAN-HPP04.....	HeatPumpPro - 4 zones



## AirBoss®

The AirBoss® is perfect for larger residences or light commercial applications and can control up to eight zones. It has the flexibility to control single or multi-stage equipment, including heat pumps.

Part#	Description
PAN-AB002 .....	AirBoss - 2-zones w/ mod bypass port
PAN-AB003 .....	AirBoss - 3-zones w/ mod bypass port
PAN-AB004.....	AirBoss - 4-zones w/ mod bypass port
PAN-AB006 .....	AirBoss - 6-zones w/ mod bypass port
PAN-AB008.....	AirBoss - 8-zones w/ mod bypass port



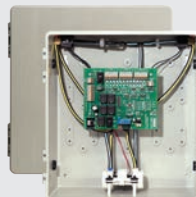
### Replacements for old style auto bypass

PAN-AB002BYP .....	AirBoss - 2-zones w/ auto bypass control
PAN-AB003BYP .....	AirBoss - 3-zones w/ auto bypass control
PAN-AB004BYP.....	AirBoss - 4-zones w/ auto bypass control
PAN-AB006BYP .....	AirBoss - 6-zones w/ auto bypass control
PAN-AB008BYP.....	AirBoss - 8-zones w/ auto bypass control

## MPS®

MPS is a solid, proven zoning panel for new construction and retrofit zoning applications. This budget-friendly panel is compatible with any single-stage equipment, and our complete line of air-driven dampers.

Part#	Description
PAN-00202 .....	202 MPS
PAN-00203 .....	203 MPS
PAN-00202MP .....	202 MPS Panel w/mod bypass port
PAN-00203MP .....	203 MPS Panel w/mod bypass port





## GTPro®

The GTPro® offers customizable software-based staging control while maximizing the operating efficiency of geothermal units. It provides many advanced staging parameters, including individually adjustable staging timers, backup heat lockouts based on outdoor temperature, loop temperature monitoring, supply air temperature-based staging with outdoor reset, and more.

Part#	Description
PAN-GTP02 .....	GTPro 2-zone panel
PAN-GTP03 .....	GTPro 3-zone panel
PAN-GTP04 .....	GTPro 4-zone panel



## Evergreen Zoning

Evergreen Zoning is the first retrofit, non-proprietary zone control system capable of controlling blower speed based upon the size of each zone. It uses HeatPumpPro technology and features a highly efficient multi-speed Evergreen ECM motor. It is made to work with Evergreen motors with economical solutions and can be sold either with the motor as a kit or separately.

Part#	Description
PAN-EHPP2.....	Evergreen zoning panel - 2-zones
PAN-EHPP3.....	Evergreen zoning panel - 3-zones
PAN-EHPP4 .....	Evergreen zoning panel - 4-zones
EVG-1HPP2.....	Kit: 2-zone panel + 1 hp motor
EVG-1HPP3.....	Kit: 3-zone panel + 1 hp motor
EVG-1HPP4 .....	Kit: 4-zone panel + 1 hp motor
EVG-1/2HPP2 .....	Kit: 2-zone panel + ½ hp motor
EVG-1/2HPP3.....	Kit: 3-zone panel + ½ hp motor
EVG-1/2HPP4 .....	Kit: 4-zone panel + ½ hp motor
MOT-EVGR1 .....	Evergreen 1hp motor
MOT-EVG.5.....	Evergreen ½ hp motor



## CoolMizer® Economizer

The CoolMizer® is a stand-alone, add-on economizer for split-system, forced air, heating, or cooling units. It delivers ventilation air or conditioned air by selectively introducing outdoor air into any ducted heating and cooling system.

Part#	Description
PAN-COOLM.....	CoolMizer panel

## Square Dampers

Part#	Description
STK-COOLS.....	Damper <sup>2</sup> (299 sq. in. and less)
STK-COOLC .....	Damper <sup>2</sup> (300 sq. in. or greater)
STK-COOLR .....	Reverse acting return damper

## Round Dampers

Part#	Description
DAM-SPRCLD .....	Spring closed component kit
DAM-SPROPN .....	Spring open component kit
DAM-RVSACT.....	Reverse acting component kit

The Damper<sup>2</sup> damper controls two airflow levels in one convenient package. The larger portion brings in larger volumes of air for free heating or cooling, while the smaller window brings in less air for controlled ventilation and IAQ.

\*Multiple round dampers may be used instead of the Damper<sup>2</sup> damper if the application necessitates round installation.



# Accessories & Specialty Panels

## AloneZone

The AloneZone limits temperature and airflow in areas that tend to over condition but do not require full control of the heating and cooling equipment.

Part#	Description
PAN-ALONE.....	AloneZone



## Zone Interface Panel

The Zone Interface control panel provides an interface for applying the special Arzel dampers with proprietary zone controls such as Lennox Harmony™ and WaterFurnace Intellizone™.

Part#	Description
PAN-INTFAC.....	Zone Interface Panel



## Smart Zone

A Smart Zone allows you to add a zone or zones to a panel where control of the equipment is not required. Unlimited Smart Zones can be added. Smart Zones cannot turn on or control the equipment.

Part#	Description
PAN-SSZN1.....	Smart Zone 1 (factory installed)
PAN-SLVKT .....	Smart Zone Zone kit (field install for MPS or AB)
PAN-SLVKTH.....	Smart Zone Zone kit (field install for HPPro)



## ZVI Board

The ZVI board can be factory installed in panels to combine forced air zoning and hydronic zoning allowing the use of a single thermostat in each zone.

Part#	Description
PCB-ZVIBD.....	Zone Valve Control circuit board



## FACT Board (Fresh Air Control Technology)

The FACT System lets you decide how much fresh air to bring in and under what conditions. Use an enthalpy control, outdoor thermostat, or a timer to limit when outdoor air is brought in.

Part#	Description
PAN-FRESH.....	Fresh Air Control (factory install)
STK-FACT6 .....	6" round FACT damper
STK-FACT8 .....	8" round FACT damper
STK-FACT10 .....	10" round FACT damper



## Universal ModuPASS® Panel

The Universal ModuPass panel monitors static pressure and modulates a damper to maintain a maximum acceptable static pressure in the supply trunk. View ModuPass dampers on pg. 14.

Part#	Description
PAN-UNIPAS.....	Universal ModuPASS® Panel



# Zoning Dampers

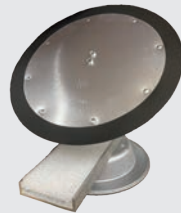
Arzel dampers are installed directly into existing ductwork, saving you time and eliminating the mess for the homeowner. The unique motor-less design makes them the quietest, most reliable in the industry. Due to the flexibility and simplicity of Arzel's damper installation, you can use branch or trunk dampers based on the application and the homeowner's lifestyle. If you don't see the size or shape that will fit your application, call your local distributor and order a custom size.

EzySlide dampers are non-position sensitive.

## EzySlide® Round Dampers

The patented EzySlide dampers are Arzel's primary damper. With over 50 sizes in stock, it is easy to find the size and shape that best fits any application.

Part#	Description
STK-ER0004.....	4" round damper
STK-ER0005.....	5" round damper
STK-ER0006.....	6" round damper
STK-ER0007.....	7" round damper
STK-ER0008.....	8" round damper
STK-ER0009.....	9" round damper
STK-ER0010.....	10" round damper
STK-ER0012.....	12" round damper
STK-ER0014.....	14" round damper
STK-ER0016.....	16" heavy-duty round damper



## Commercial Round Dampers

Part#	Description
STK-COM12.....	12" round commercial grade damper
STK-COM14.....	14" round commercial grade damper
STK-COM16.....	16" round commercial grade damper
STK-COM18.....	18" round commercial grade damper
STK-COM20.....	20" round commercial grade damper



## Dampers Installed in Sleeves

Part#	Description
SLV-4INST.....	4" damper inst. in sleeve
SLV-5INST.....	5" damper inst. in sleeve
SLV-6INST.....	6" damper inst. in sleeve
SLV-7INST.....	7" damper inst. in sleeve
SLV-8INST.....	8" damper inst. in sleeve
SLV-9INST.....	9" damper inst. in sleeve
SLV-10INST.....	10" damper inst. in sleeve
SLV-12INST.....	12" damper inst. in sleeve
SLV-14INST.....	14" damper inst. in sleeve

## Sheet Metal Duct Sleeves

Part#	Description
SLEEVE-DUCT4	Duct sleeve 4"
SLEEVE-DUCT5	Duct sleeve 5"
SLEEVE-DUCT6	Duct sleeve 6"
SLEEVE-DUCT7	Duct sleeve 7"
SLEEVE-DUCT8	Duct sleeve 8"
SLEEVE-DUCT9	Duct sleeve 9"
SLEEVE-DUCT10	Duct sleeve 10"
SLEEVE-DUCT12	Duct sleeve 12"
SLEEVE-DUCT14	Duct sleeve 14"

# Zoning Dampers

## EzySlide® Rectangular Dampers

The rectangular EzySlide dampers have the mounting plate and actuator mounted on either the side or bottom of the damper. If the mounting plate and actuator are on the longer dimension, the damper is referred to as a bottom-mount damper. If the mounting plate and actuator are on the shorter size, the damper is referred to as a side-mount damper.



### Bottom-Mount EzySlide®

(Actuator is on the longer dimension)

Part#	Description
STKSB-E 8x10 .....	8" x 10" EzySlide BotMt
STKSB-E 8x12 .....	8" x 12" EzySlide BotMt
STKSB-E 8x14 .....	8" x 14" EzySlide BotMt
STKSB-E 8x16 .....	8" x 16" EzySlide BotMt
STKSB-E 8x18 .....	8" x 18" EzySlide BotMt
STKSB-E 8x20 .....	8" x 20" EzySlide BotMt
STKSB-E 8x22 .....	8" x 22" EzySlide BotMt
STKSB-E 8x24 .....	8" x 24" EzySlide BotMt
STKSB-E 8x26 .....	8" x 26" EzySlide BotMt
STKSB-E 8x28 .....	8" x 28" EzySlide BotMt
STKSB-E 8x30 .....	8" x 30" EzySlide BotMt
STKSB-E10X12 .....	10" x 12" EzySlide BotMt
STKSB-E10X14 .....	10" x 14" EzySlide BotMt
STKSB-E10X16 .....	10" x 16" EzySlide BotMt
STKSB-E10X18 .....	10" x 18" EzySlide BotMt
STKSB-E10X20 .....	10" x 20" EzySlide BotMt
STKSB-E10X22 .....	10" x 22" EzySlide BotMt
STKSB-E10X24 .....	10" x 24" EzySlide BotMt
STKSB-E10X26 .....	10" x 26" EzySlide BotMt
STKSB-E10X28 .....	10" x 28" EzySlide BotMt
STKSB-E10X30 .....	10" x 30" EzySlide BotMt
STKSB-E12X14 .....	12" x 14" EzySlide BotMt
STKSB-E12X16 .....	12" x 16" EzySlide BotMt
STKSB-E12X18 .....	12" x 18" EzySlide BotMt
STKSB-E12X20 .....	12" x 20" EzySlide BotMt
STKSB-E12X22 .....	12" x 22" EzySlide BotMt
STKSB-E12X24 .....	12" x 24" EzySlide BotMt
STKSB-E12X26 .....	12" x 26" EzySlide BotMt
STKSB-E12X28 .....	12" x 28" EzySlide BotMt
STKSB-E12X30 .....	12" x 30" EzySlide BotMt



### Side-Mount EzySlide®

(Actuator is on the shorter dimension)

Part#	Description
STKSS-E 6x6 .....	6" x 6" EzySlide SidMt
STKSS-E 8x8 .....	8" x 8" EzySlide SidMt
STKSS-E 8x10 .....	8" x 10" EzySlide SidMt
STKSS-E 8x12 .....	8" x 12" EzySlide SidMt
STKSS-E 8x14 .....	8" x 14" EzySlide SidMt
STKSS-E 8x16 .....	8" x 16" EzySlide SidMt
STKSS-E 8x18 .....	8" x 18" EzySlide SidMt
STKSS-E 8x20 .....	8" x 20" EzySlide SidMt
STKSS-E 10x10 .....	10" x 10" EzySlide SidMt
STKSS-E 10x12 .....	10" x 12" EzySlide SidMt
STKSS-E 10x14 .....	10" x 14" EzySlide SidMt
STKSS-E 10x16 .....	10" x 16" EzySlide SidMt
STKSS-E 10x18 .....	10" x 18" EzySlide SidMt
STKSS-E 10x20 .....	10" x 20" EzySlide SidMt
STKSS-E 12x12 .....	12" x 12" EzySlide SidMt
STKSS-E 12x14 .....	12" x 14" EzySlide SidMt
STKSS-E 12x16 .....	12" x 16" EzySlide SidMt
STKSS-E 12x18 .....	12" x 18" EzySlide SidMt
STKSS-E 12x20 .....	12" x 20" EzySlide SidMt
STKSS-E 14X14 .....	14" x 14" EzySlide SidMt

# Zoning Dampers - Special

These zoning dampers fit into spaces traditional dampers can't. Mix and match with EzySlide dampers to create a zoning system that wouldn't be possible with traditional dampers alone.

## RegiDamper® Register Dampers

The Regi-Damper is the answer when there is limited access or non-metallic ductwork. It installs directly into the register boot behind the register.

Part#	Description
REG-2x10.....	RegiDamper 2" x 10"
REG-2x12.....	RegiDamper 2" x 12"
REG-3x10.....	RegiDamper 3" x 10"
REG-3x12.....	RegiDamper 3" x 12"
REG-4x10.....	RegiDamper 4" x 10"
REG-4x12.....	RegiDamper 4" x 12"
REG-6x10.....	RegiDamper 6" x 10"
REG-6x12.....	RegiDamper 6" x 12"



## EzyFit Concealed Retrofit Dampers

The EzyFit Dampers are versatile; slipping through the register boot, a strong magnet holds it securely in the metallic round pipe for zoning partly and mostly finished basements.

Part#	Description
STK-EZFT5.....	5" Ezy-Fit retrofit boot-loading damper
STK-EZFT6.....	6" Ezy-Fit retrofit boot-loading damper
STK-EZFT7.....	7" Ezy-Fit retrofit boot-loading damper



## InsertaDamper® Take-Off/Underground Dampers

The Inserta Damper features a spring-loaded belly band that holds it firmly in any type of round duct. This makes it a good fit for applications where the main trunk is accessible, but the take-off runs are not, or in rigid non-metallic ducting.

Part#	Description
INSRT-5.....	5" Inserta Damper
INSRT-6.....	6" Inserta Damper
INSRT-7.....	7" Inserta Damper
INSRT-8.....	8" Inserta Damper



## Oval Dampers

The Oval Dampers have all of the convenience of the EzySlide for all of your space-saving duct applications. We provide standard sizes through your local distributor.

Part#	Description
STKO-ER0006	6" Oval stack Damper
STKO-ER0007	7" Oval stack Damper
STKO-ER0008	8" Oval stack Damper



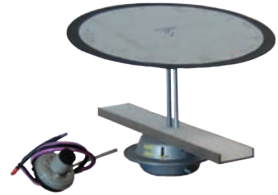
# Bypass Dampers

## ModuPASS® Modulating Bypass System

The ModuPass system works with variable speed motors, constantly monitors the trunk's static pressure, and adjusts to allow the prescribed amount of bypass air.

### Modulating Bypass Kit

Part#	Description
MOD-BYP08 .....	8" Modulating Bypass Kit
MOD-BYP10 .....	10" Modulating Bypass Kit
MOD-BYP12 .....	12" Modulating Bypass Kit
MOD-BYP14 .....	14" Modulating Bypass Kit



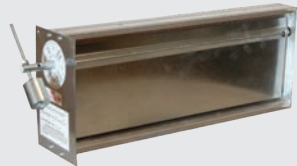
### Modulating Dampers

Part#	Description
MOD-DMP06 .....	6" Modulating damper (damper only)
MOD-DMP08 .....	8" Modulating damper (damper only)
MOD-DMP10 .....	10" Modulating damper (damper only)
MOD-DMP12 .....	12" Modulating damper (damper only)
MOD-DMP14 .....	14" Modulating damper (damper only)
MOD-FDKIT .....	ModuPass kit (field install)
BYP-00KIT .....	Auto Bypass kit (field install)

## Barometric Bypass

For simple bypass applications with PSC blowers, Arzel offers barometric bypass dampers in many standard sizes.

Part#	Description
SPD-R0008 .....	Barometric damper 8" round
SPD-R0010 .....	Barometric damper 10" round
SPD-R0012 .....	Barometric damper 12" round
SPD-R0014 .....	Barometric damper 14" round
SPD-R0016 .....	Barometric damper 16" round
SPD-S0812 .....	Barometric damper 12" x 8"
SPD-S0820 .....	Barometric damper 20" x 8"
SPD-S1210 .....	Barometric damper 12" x 10"
SPD-S1212 .....	Barometric damper 12" x 12"
SPD-S2010 .....	Barometric damper 20" x 10"
SPD-S2012 .....	Barometric damper 20" x 12"





# Balancing Dampers

## BalancePro® Balancing Damper

The Balance Pro damper provides the opportunity to balance airflow in existing systems based upon the load calculation and measurements performed at each register or diffuser.

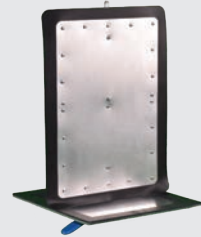
### Round BalancePro® Dampers

Part#	Description
STK-BALR5.....	5" BalancePro
STK-BALR6 .....	6" BalancePro
STK-BALR7 .....	7" BalancePro
STK-BALR8 .....	8" BalancePro
STK-BALR9 .....	9" BalancePro
STK-BALR10.....	10" BalancePro
STK-BALR12.....	12" BalancePro



### Rectangular BalancePro® Dampers

Part#	Description
STK-BLS08 .....	8" x 8" Balance Pro
STK-BLS10 .....	10" x 10" Balance Pro
STK-BLS12.....	12" x 12" Balance Pro
STK-BLS810.....	8" x 10" Balance Pro
STK-BLS812.....	8" x 12" Balance Pro
STK-BLS814.....	8" x 14" Balance Pro



# Small-Duct High-Velocity Dampers

## Zonocity® Small-Duct High-Velocity damper

With our Zonocity damper, you are now able to zone small-duct, high-velocity applications. Trunk dampers and bypass dampers are also available for SDHV applications.

Part#	Description
STK-HYV02.....	2" high velocity damper (Qty: 5)
SLV-65INST .....	6.5" sq. damper in sleeve
SLV-85INST .....	8.5" sq. damper in sleeve
SLV-95INST .....	9.5" sq. damper in sleeve
MOD-HYP06.....	6" rd. high velocity mod bypass kit
MOD-DMP06.....	6" rd. high velocity mod bypass damper



# Installation Components

## Tubing

Color-coded tubing is available for easy zone identification. We also offer Plenum-rated UC fire and smoke-rated tubing for use in warm air ducts. PVC tubing available in 200ft, Plenum available in 250ft.



### Standard Tubing

Black PVC tubing with a stripe in the color indicated

Part#	Description
PVC-BLUE	blue stripe
PVC-GREEN	green stripe
PVC-ORANGE	orange stripe
PVC-PINK	pink stripe
PVC-PURPLE	purple stripe
PVC-RED	red stripe
PVC-WHITE	white stripe
PVC-YELLOW	yellow stripe

### Plenum-Rated Tubing

Plenum-rated tubing with a stripe in the color indicated

Part#	Description
PLEN-BLUE	blue
PLEN-GREEN	green
PLEN-ORANGE	orange
PLEN-BLACK	black
PLEN-PURPLE	purple
PLEN-RED	red
PLEN-WHITE	white
PLEN-YELLOW	yellow

## Fittings



Part#	Description
FIT-TT025 .....	Black Tee 4mm Barb (Qty: 25)
FIT-TE025 .....	Black Elbow 4mm Barb (Qty: 25)
FIT-TP025 .....	Black Plug 4mm Barb (Qty: 25)
FIT-TC025 .....	Black Coupling 4mm Barb (Qty: 25)

# Installation Tools

## Tool Kit

All the fittings and tools needed to install an Arzel Zoning system are included in the Tool Kit - tubing stapler, airflow indicator, ductfinder, EzyHub, proper length sheet metal screws, and fittings: connectors, tees, elbows, and plugs.



## Spare Parts Kit

The spare parts kit includes a modulating bypass transmitter, airflow indicator, 25 each of couplings, elbows, plugs, and tees, 5 20-amp fuses, a panel pump, 12 red caps, 2 sensors, 2 solenoids, and a transformer.

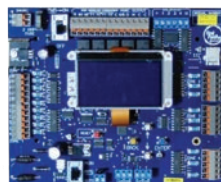


Part#	Description
TOOL-KIT	Tool Kit
TOOL-RPKIT	Spare Parts Kit
EZYHUB	EzyHub Air Distribution reservoir
TOOL-AIRFLOW	Airflow indicator
DUCTFINDER	Duct Finder
TOOL-GUN	Stapler
TOOL-STPLS	Staples
TOOL-SNKIT	90-degree right & left snips

# Replacement Parts

## Control Boards

Part#	Description
PCB-00202 .....	202 MPS Circuit board
PCB-00203 .....	203 MPS Circuit board
PCB-02002 .....	AirBoss 2-zone circuit board
PCB-02003 .....	AirBoss 3-zone circuit board
PCB-02004 .....	AirBoss 4-zone circuit board
PCB-02006 .....	AirBoss 6-zone circuit board
PCB-02008 .....	AirBoss 8-zone circuit board
PCB-HPP02.....	HeatPumPro 2-zone circuit board
PCB-HPP03.....	HeatPumPro 3-zone circuit board
PCB-HPP04.....	HeatPumPro 4-zone circuit board
PCB-COOLM.....	CoolMizer circuit board
PCB-GTP02.....	GTPro 2-zone circuit board
PCB-GTP03.....	GTPro 3-zone circuit board
PCB-GTP04.....	GTPro 4-zone circuit board
PCB-FACT.....	Fresh air control circuit board
PCB-SSZNG.....	Smart circuit board
PCB-ZVIBD.....	Zone Valve Control circuit board



## Pump and Sensors

Part#	Description
SEN-UPS12.....	LAT sensor (AirBoss)
SEN-RESPRO.....	LAT / OAT / LOOP sensor (HeatPumPro, GTPro)
SENS-COOLM .....	CoolMizer sensor
PMP-PUMP1.....	Pump pressure/vacuum assy
PAN-SOLO5.....	24 vdc solenoid valve
BYP-SWICH.....	Pressure switch (automatic bypass)



## Transformers

Part#	Description
TRANS-40VARS.....	24VAC 40VA resettable transformer (2-4 zone)
TRANS-100VA.....	24VAC 100VA transformer (6-8 zone)
MOD-BYPAS .....	Modulating bypass transmitter kit
PAN-FUSE2.....	MPS panel fuse (2amp) Qty. 5



# Training Opportunities

**Sign up for training at**  
**[www.arzelzoning.com/training](http://www.arzelzoning.com/training)**



## Training at Arzel's Cleveland Lab

**NATE CREDITS: 10**

**OCILB CREDITS: 10**

Our most comprehensive training is Comfort College®, a day-long training event at our facility in Cleveland, Ohio. It's worth the trip to get hands-on experience in our lab. These topics are included:

- How to sell zoning
- Application design
- System components
- Arzel product overview
- Thermostat options
- Airflow & bypass theory (lab)
- Installation exercise (lab)
- Wiring options and specialty panels
- HeatPumpPro® setup and features
- GTPro™ features and benefits
- SDHV zoning and CoolMizer
- Testing dampers, pump, solenoids
- Warranty
- Marketing support materials



**Comfort College®**  
Turning airflow into cashflow, one class at a time



## On-Site Training

**NATE AND OCILB CREDITS AVAILABLE**

We'll come to you! If you have a group that needs training (typically 10-15 people), let's talk about on-site training. You can mix-and-match topics to tailor the class to fit your group. We start with a product overview (45-60 min.) and add the topics of your choice. Total class time is a minimum of 2 hours. We also do half-day and full-day classes if you have the time.

## Webinars

Our webinars are quick, convenient sessions that work around your schedule. You can select a topic below, or request customized content to fit your team's specific needs. Webinars have live facilitators, and you're encouraged to ask questions and make sure you get what you need from our experts.

## Training Videos

Many of our webinars and other trainings are available online. Check the Video tab on our website for short how-to videos and more in-depth training videos.

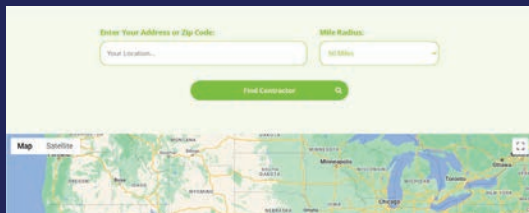


# Resources for Homeowners

## Contractor Locator

[www.arzelzoning.com/locator-signup](http://www.arzelzoning.com/locator-signup)

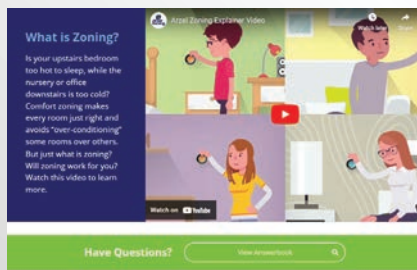
When homeowners visit our website, they use our contractor locator to find an HVAC contractor in their area with Arzel experience. Add your name to our list, or update your listing, and we'll send zoning leads your way.



## Homeowner Website

[www.arzelcomfort.com](http://www.arzelcomfort.com)

If your client has questions about zoning, send them to our homeowner website. They'll find a non-technical explanation of zoning, and answers to their questions about why to get zoning, our warranty, and the installation process.



## Brochures

Let us know if you need brochures to leave behind with your clients. Our homeowner brochure explains the basics of zoning so your customers have more information as they consider their options. We would be happy to ship brochures to you at no charge, and we can even customize them with your company information.

To request brochures,  
email [marketing@arzelzoning.com](mailto:marketing@arzelzoning.com)  
or call us at (216) 831-6068.



# Limited Lifetime Warranty



Since 2013, all Arzel Zoning systems, if registered within 90 days of installation, are covered by a Limited Lifetime Warranty.

Scan the QR code or go to [arzelzoning.com/warranty](http://arzelzoning.com/warranty) for more information.



## Contractor Technical Support

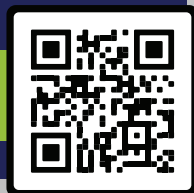
**(800) 611-8312**

**[techsupport@arzelzoning.com](mailto:techsupport@arzelzoning.com)**

Contact Arzel Zoning Tech Support Monday through Friday from 8am EST - 5pm EST with any technical questions or issues.

Have questions after hours? Between 5pm EST and 9pm EST, Arzel offers after-hours technical support.

*Have you seen our How-To Videos?*  
[arzelzoning.com/how-to-videos!](http://arzelzoning.com/how-to-videos!)



4801 Commerce Parkway  
Cleveland, OH 44128

For contractors:  
[www.arzelzoning.com](http://www.arzelzoning.com)

Phone: (216) 831-6068  
Fax: (216) 831-6074  
Email: [sales@arzelzoning.com](mailto:sales@arzelzoning.com)

For homeowners:  
[www.arzelcomfort.com](http://www.arzelcomfort.com)

Tech Support: (800) 611-8312

